

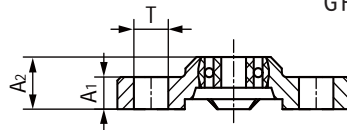
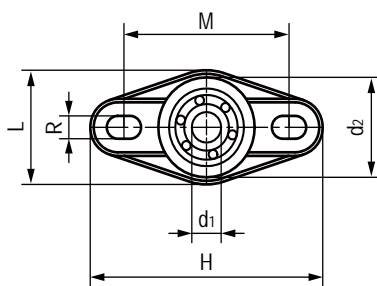
GFB-BB法兰滚动轴承 Flange ball bearings



产品特性 Product features

- 干运行、免维护
 - 补偿中心误差
 - 耐腐蚀，可用于液体介质环境
 - 顺畅运行，无噪音
 - 长期使用温度：-40°C-80°C
 - 基座高强度材料：CSB® M163
 - 轴承材料：环-POM，保持架-PA，球-不锈钢或玻璃
- Dry operation and maintenance-free
 - Compensation of misalignment errors
 - Absolute corrosion resistance
 - Smooth running and no noise
 - Long-term application temperature: -40°C-80°C
 - Housing high-strength material: CSB® M163
 - Bearing material: Rings-POM, Cage-PA, Balls-Stainless steel or glass

标准规格 Standard specifications



产品编码 Part No.:

GFB-BB-P08-POM-PA-ES

- GL: 玻璃球 Glass balls
- ES: 不锈钢球 Stainless steel balls
- 保持架材料 Cage material
- 外圈材料 Outer ring material
- 内径 Inner diameter
- 滚动轴承 Ball bearing

产品编码 Part No.	d ₁ E10 [mm]	d ₂ [mm]	A ₁ [mm]	A ₂ [mm]	T [mm]	L [mm]	H [mm]	Z [mm]	M [mm]	最大载荷 Max. capacity load		最大速度 Max. speed [RPM]	最大 调节角度 Max. pivot angle	重量 Weight [g]
										静态 Static [N]	动态 Dynamic [N]			
GFB-BB-P08-POM-PA-ES	08	32	10	17.5	10.1	38	72.6	6.4	53	80	94	2200	5.0°	22.9
GFB-BB-P10-POM-PA-ES	10	40	11	20	12.5	47	89	8.4	65	110	130	1900	5.0°	35.8
GFB-BB-P12-POM-PA-ES	12	48.5	14	25	12.6	58.5	101	8.4	75	130	147	2000	5.0°	57.5
GFB-BB-P08-POM-PA-GL	08	32	10	17.5	10.1	38	72.6	6.4	53	80	94	2200	5.0°	20.7
GFB-BB-P10-POM-PA-GL	10	40	11	20	12.5	47	89	8.4	65	110	130	1900	5.0°	33.6
GFB-BB-P12-POM-PA-GL	12	48.5	14	25	12.6	58.5	101	8.4	75	130	147	2000	5.0°	55.4